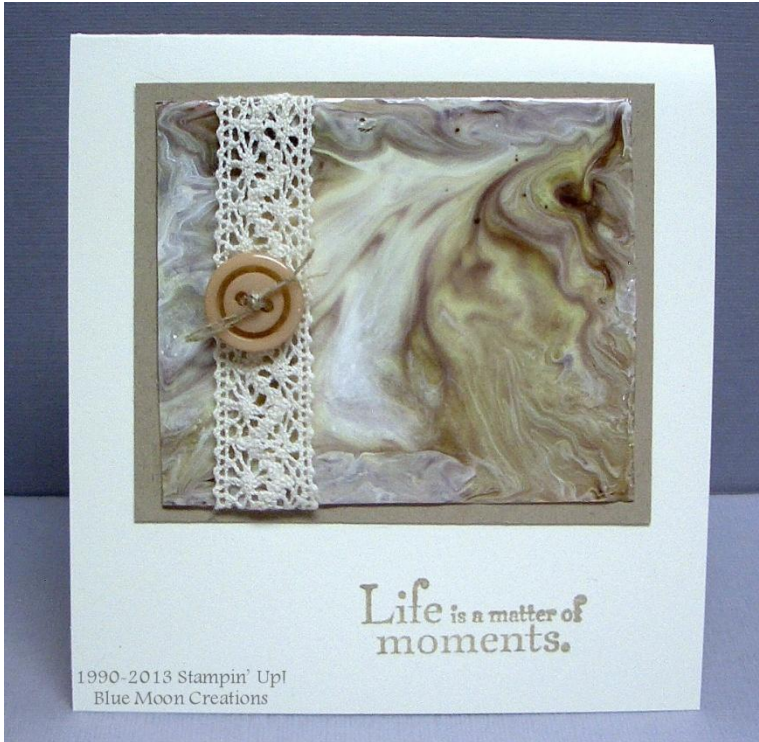


Quartz Technique



What you need:

- window sheet or transparency sheet
- dye ink reinkers
- Whisper White craft (pigment) reinker
- Crystal Effects
- stylus, jumbo paper clip, toothpick (something to swirl the ink around)
- time This technique takes some time for the Crystal Effects to dry

Watch out, this technique is very, very addictive!



1. Spread a layer of Crystal Effects onto cut piece of window or transparency sheet. Bring the Crystal Effects all the way to the edges.

Blue Moon Creations, 2013



2. Add drops of dye reinker onto a plastic lid (or similar) to create a palette. Pick up the ink on the tip of a metal-tipped object like a stylus or open paper clip and add to the Crystal Effects by touching the ink to the Crystal Effects lightly.

You will see the drops start to spread through the Crystal Effects

For this project, we are only using Crumb Cake, but you could add 2-3 different colors. Just be careful when mixing the colors that they don't become muddy.

TIP: Use a metal tipped object rather than a toothpick as the ink will soak into the wood of the toothpick.

Blue Moon Creations, 2013



3. Add drops of Whisper White craft ink into the Crystal Effects. The Whisper White craft ink is the key to the swirls in this technique.



4. With the tip of your Stylus, paper clip or toothpick, swirl the inks together. Use a “Lazy S” pattern to mix.

5. Now this is the hard part. Set the project aside for 35-45 min. Set it out of the way so it doesn’t get bumped or something gets set on top of it (talking from experience here!)

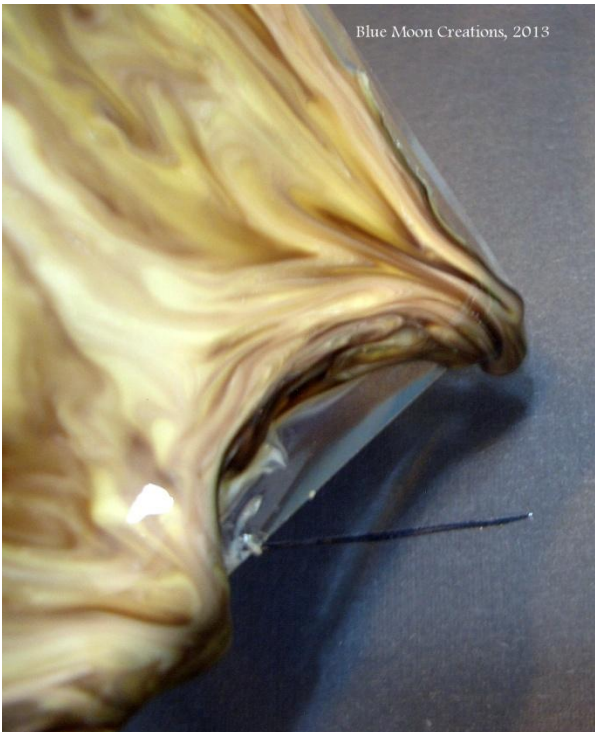
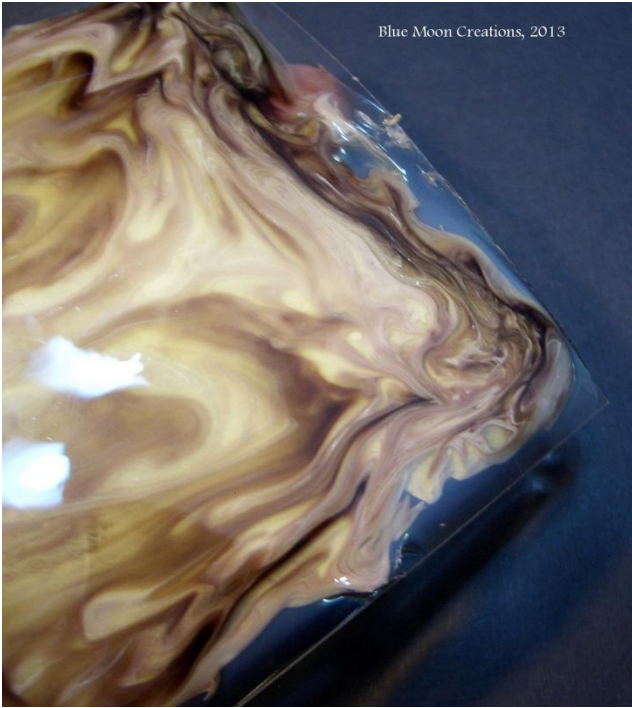
You want the Crystal Effects to start to dry, but not completely dry. (Total drying time for this amount of Crystal Effects could take hours, even overnight.)

What will happen is the upper layer of the Crystal Effects will dry, but the lower layer will still be fluid.



6. After 35-45 min, pick up the sheet and hold it so the Crystal Effects starts to run. Turn it this way and that mix the colors.

See how in the lower left the Crystal Effects is starting to pool?



Turn it and let it run to the end of the sheet and drop off onto your worksheet. You can use these droplets to add to your sheet as desired. Simply pick them up with the end of your stylus, place on the sheet and swirl around.



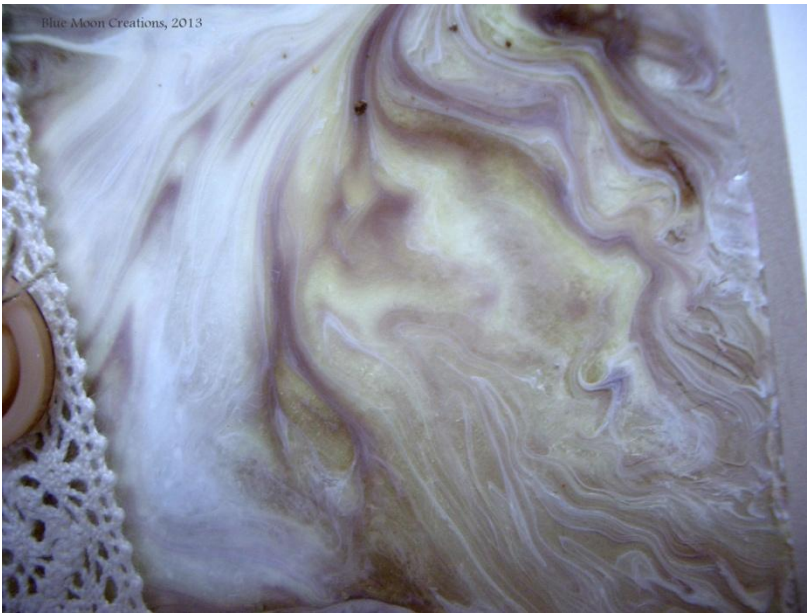
7. Keep turning the sheet to allow the colors to swirl and blend.

TIP: Don't drop the sheet! Again, talking from experience here! You will have a smooshy mess on your worksheet and on your quartz sheet. Don't throw it away though! It can be used for a different look and project

If you want more swirls or to fill in areas, simply add more Crystal Effects and drops Whisper White craft ink. Swirl it around with your Stylus.



8. When you are satisfied, set the sheet aside and out of the way to dry completely. Again, it may take hours or overnight. I set mine on top of our pellet stove and it takes 2-3 hours to completely dry.



Soft swirls. Every piece will be different and unique!

9. When the sheet has dried completely, complete the card.

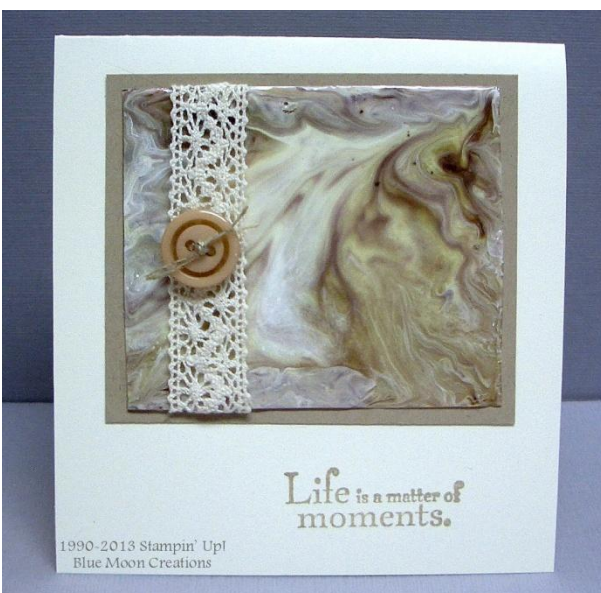
-Mount quartz sheet to Crumb Cake mat using SNAIL adhesive.

-Apply SNAIL adhesive to the ends of Crochet Trim and add to the side of the quartz sheet, securing at the back.

-Thread Linen Thread through Crumb Cake button and add to the Crochet Trim using a Mini Glue Dot.

-Stamp greeting from Elements of Style using Crumb Cake ink.

-Attach matted quartz to Very Vanilla card base.



Supplies Used:

Stamp Set: Elements of Style

Ink: Crumb Cake, Crumb Cake reinker, Whisper White craft reinker

Accessories: window sheet, Crystal Effects, 5/8" Crochet Trim, Linen Thread, Crumb Cake button, Mini Glue Dot, stylus



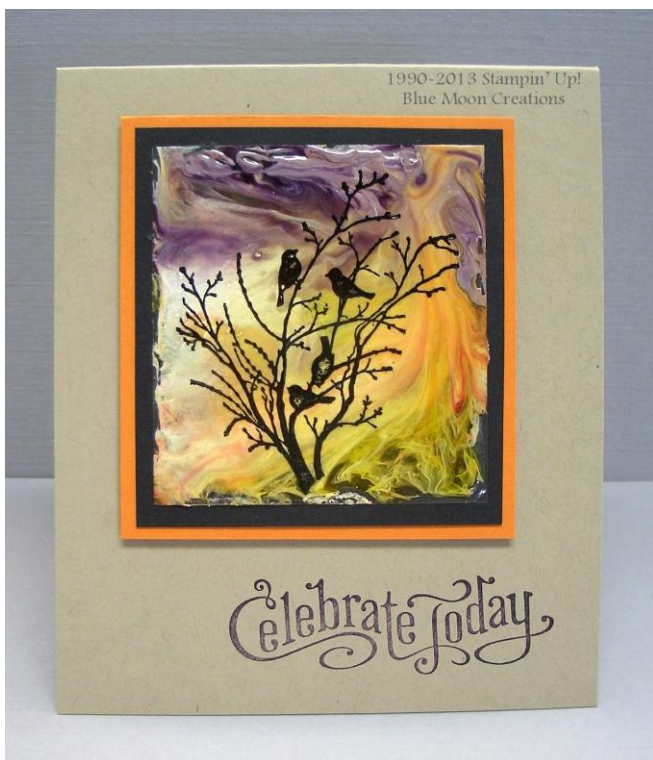
Create landscape scenes using the Quartz Technique. Reinkers used for this card was Certainly Celery, Bashful Blue, Rose Red and Pink Pirouette. After the quartz sheet is totally dry, stamp image using Stazon.

Stamp Sets: Serene Silhouettes, Thank you Kindly

Ink: Certainly Celery, Bashful Blue, Rose Red, Pink Pirouette, craft Whisper White reinkers, Black Stazon, Real Red

Paper: Whisper White, Marina Mist

Accessories: window sheet, Crystal Effects, stylus, Dimensionals



Stamp Sets: Serene Silhouettes, Perfectly Penned

Ink: Daffodil Delight, Pumpkin Pie, Tangerine Tango, Perfect Plum, craft Whisper White reinkers, Black Stazon, Elegant Eggplant

Paper: Crumb Cake, Pumpkin Pie, Basic Black

Accessories: window sheet, Crystal Effects, stylus, Dimensionals



Create swirling abstracts using the Quartz Technique. Reinkers used for this card was Marina Mist, Real Red and Daffodil Delight

Stamp Sets: Bloomin' Marvelous, Pennant Parade

Ink: Marina Mist, Real Red, Daffodil Delight, craft Whisper White reinkers, Real Red

Paper: Daffodil Delight, Marina Mist, Whisper White

Accessories: window sheet, Crystal Effects, stylus, Jewelry punch, Real Red 1/8" Taffeta ribbon



This was my swap card for January using the Quartz Technique.

I first cut a heart out of my Bashful Blue card front using the Big Shot and Hearts Collection Framelit. The Quartz heart sits on the inside of the card, showing through to the front. Again, I used the Big Shot and Hearts Collection Framelit to cut the heart out of the window sheet. The scored Bashful Blue front is simply attached to an Elegant Eggplant base. For interest, I pierced around the heart on the front using my Paper Piercing Tool, Mat and Occasions Paper-Piercing Bundle.

Stamp Set: All Holidays (retired)

Ink: Elegant Eggplant, Elegant Eggplant, Melon Mambo, Bashful Blue reinkers, craft Whisper White reinker

Paper: Elegant Eggplant, Bashful Blue, Whisper White

Accessories: window sheet, Crystal Effects, Big Shot, Hearts Collection framelits, Modern Label punch, Paper Piercing Tool and Mat, Occasions Paper-Piercing Pack, Dimensionals



Here is my worksheet with the drying hearts I used for the swap cards.

Experiment with different colors. Have fun!