



Spiral Dye

Stamp Set: Spiral Dye, Blossoms in Bloom

Ink: Fresh Freesia, Blackberry Bliss

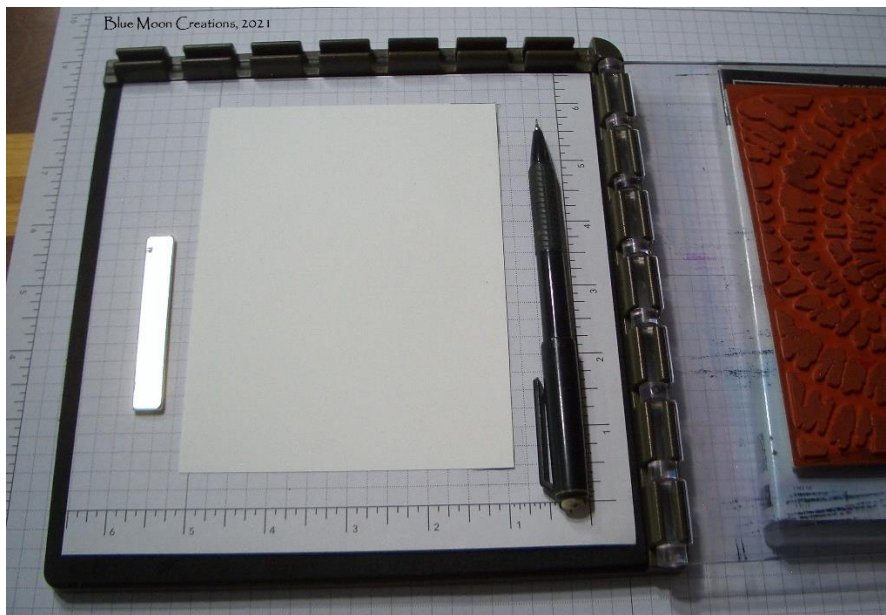
Paper: Fresh Freesia, Blackberry Bliss, Basic White,

Accessories: Stamparatus, grid sheet paper, Stampin' Cut & Emboss Machine, Stitched Rectangle and Oval Dies, sponge, Mini Dimensionals

The color combinations are endless with this stamp. Stamp using one color, then turn the paper 180 degrees, and stamp with a second color.

Using the Stamparatus or other placement tool makes this process easy.

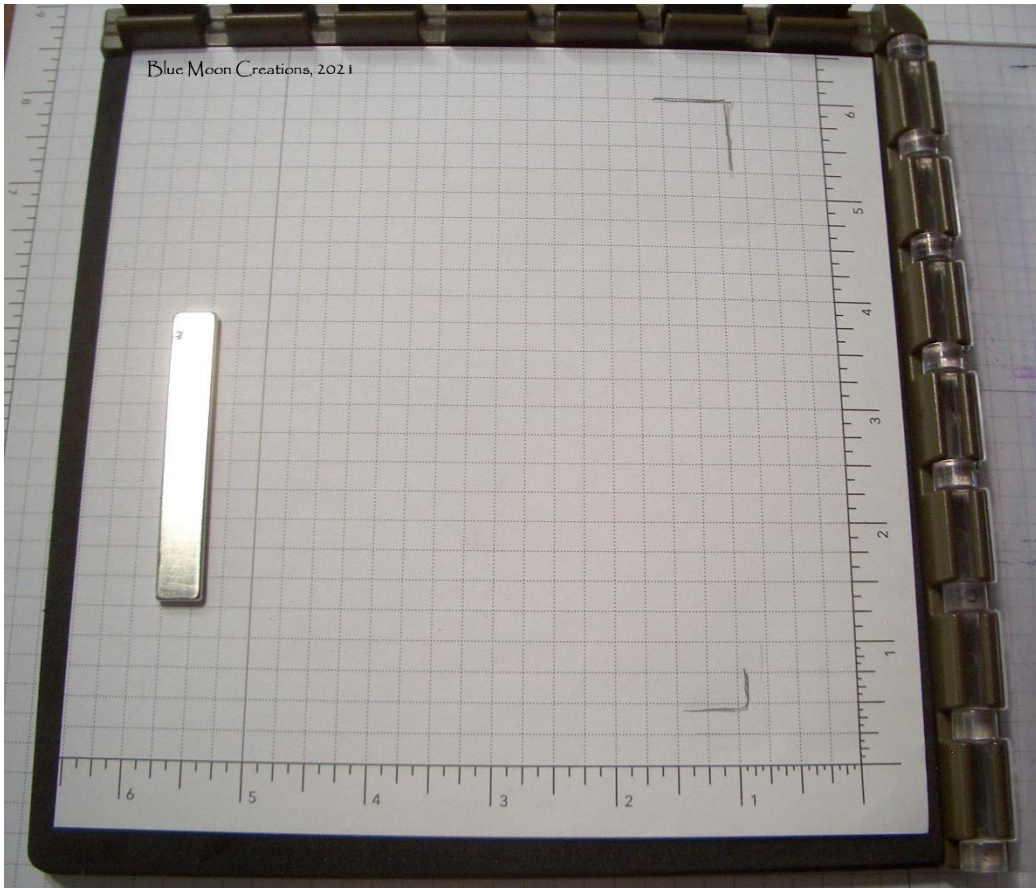
Here's how:



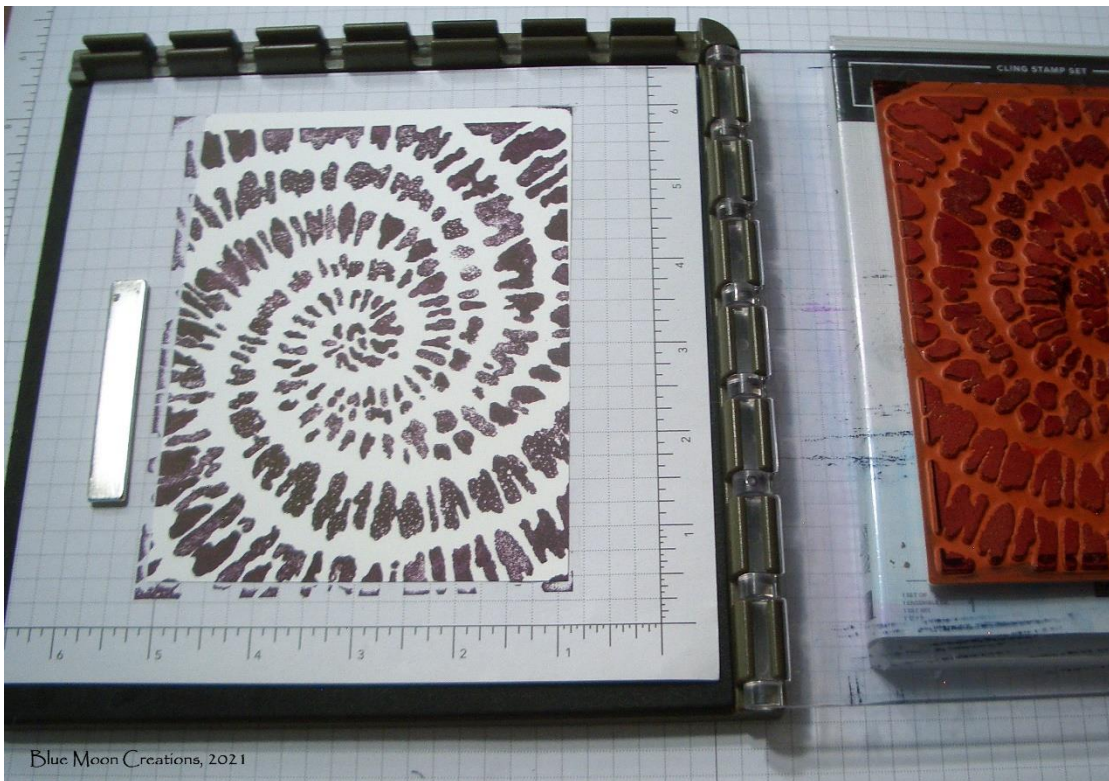
1. When stamping the spiral dye image, it is easiest to turn the card stock rather than turning the stamp.

You'll need to determine the placement of the card stock on the Stamparatus or placement tool so you can line it up to the proper place when it has been turned.

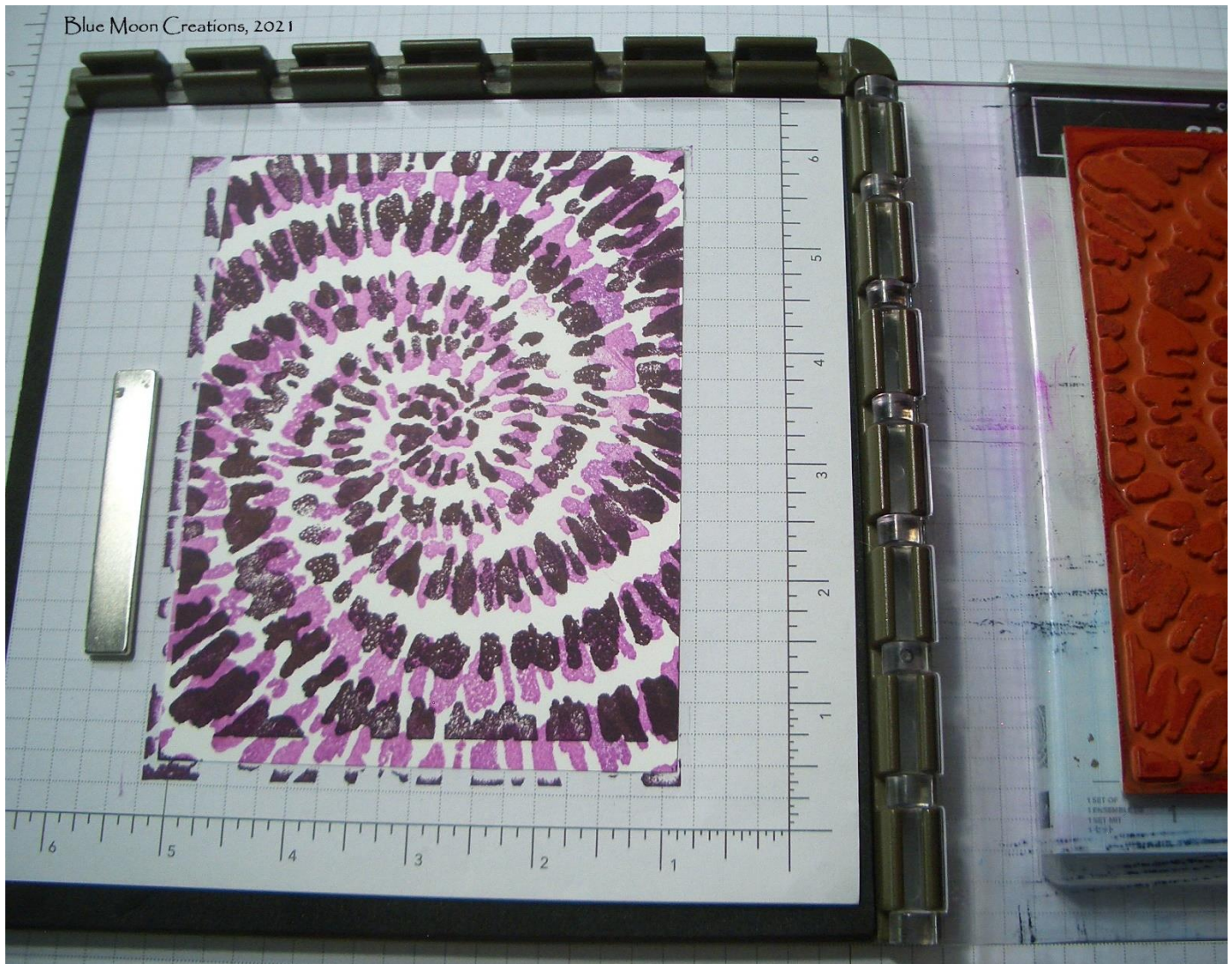
Start by cutting a grid sheet paper to fit the Stamparatus (7" x 7"). Determine the placement of the stamp on the hinged plate, then place the card stock on the grid sheet paper to match. With a pencil, mark two of the corners of the card stock on the grid sheet paper. I started with a piece of Basic White card stock measuring 4 1/4" x 5 1/2". I trimmed it down to 3 3/4" x 5" for the final project.



Now you'll know where to place the card stock by lining the edges up with the pencil marks.



2. Ink up the stamp with the first color (Blackberry Bliss), stamp the image by closing the plate on the card stock, and pressing with your fingertips. If parts of the image need more ink, open the plate, reink, and repeat. Make sure the card stock does not shift. If it does, line up the corners with the pencil marks.



3. Now, you are ready to add your second color. Clean the stamp. Rotate card stock 180 degrees, lining up the edge with the pencil marks. Ink up the stamp with the second color (Fresh Freesia), stamp the image by closing the plate on the card stock, and pressing with your fingertips. If parts of the image need more ink, open the plate, reink, and repeat. Make sure the card stock does not shift. If it does, line up the corners with the pencil marks.



4. If you want to add a third color, simply lower the card stock $\frac{1}{4}$ " on the grid sheet paper, making sure the edges are lined up with the pencil marks.



Clean the stamp. Ink up the stamp with the third color (Bermuda Bay), stamp the image by closing the plate on the card stock, and pressing with your fingertips. If parts of the image need more ink, open the plate, reink, and repeat. Make sure the card stock does not shift. If it does, line up the corners with the pencil marks.



Blackberry Bliss, Fresh Freesia, Bermuda Bay



Bermuda Bay, Gorgeous Grape



Blackberry Bliss, Fresh Freesia



Gorgeous Grape, Polished Pink



Pool Party, Pacific Point



Fresh Freesia, Bermuda Bay



Fresh Freesia, Bermuda Bay, Bumblebee