

Friendship Garden Seed Packet Cards



Templates for Friendship Seed Packets are provided in separate .doc files. This will enable you to change the templates and tailor them to meet your needs.

Perfect for all-season occasions.

With this Flower Seed Packet card tutorial, I'll show you how to create seed packet cards for any occasion or season.

For an added touch, include a packet of flower seeds that coordinate with the image on the card front!

Want to create a flower seed packet collection and give it as a gift?

This tutorial includes an easy box, perfect for any gift-giving occasion: bridal or baby shower, birthday, Mother's Day, thinking of you or....?



-Easily change the greetings on the front of the seed packets to fit your needs and season.

-Add stamps, ink, and paper to create of your choosing.

-I used Stampin' Up! product, but you could easily use what you have in your collection.

Happy Stamping, Happy Growing!





Pansy Friendship Mix Card

Stamp Set: Pansy Patch

Ink: Blushing Bride, Polished Pink, Fresh Freesia, Blackberry Bliss, Crushed Curry

Paper:

Evening Evergreen- 5 ½" x 4 ¼" card base,

4 ½" x 3 ¾" mat,

scrap for leaves

Basic White- seed packet print-out trimmed to 4 ¼" x 3 ½",

scrap for pansies

Soft Succulent-scrap for leaves

Pansy Petals Designer Series Paper- 5 ¼" x 4"

Accessories: computer printer, Stampin' Cut & Emboss Machine, Pansy Dies, Tombow Liquid Glue, Mini Dimensionals

1. Print Friendship Mix Seed Packet on Basic White card stock. Trim individual seed packets using a paper trimmer.
2. Five-step stamp pansies using Pansy Patch stamp set.
 - Stamp the solid image in a lighter color. For this card, I used Blushing Bride and Fresh Freesia.
 - Stamp the detailed image in a darker color. For this card, I used Polished Pink and Blackberry Bliss
 - stamp the center of the flowers. For this card, I used Fresh Freesia and Polished Pink.
 - Stamp the stamen of the flowers. For this card, I used Blackberry Bliss.
 - stamp the center of the flowers. For this card, I used Crushed Curry.
3. Cut the pansies out using the coordinating Pansy Die.
4. Cut the leaves using Pansy Die. Solid image out of Soft Succulent card stock. Detailed image out of Evening Evergreen card stock.
5. Attach pansies to seed packet card front using Mini Dimensionals to pop up the pansies. Slip the leaves behind the pansies using Tombow Glue.
6. Attach seed packet card front to Evening Evergreen mat. Attach Pansy Petals Designer Paper to Evening Evergreen card base. Attach seed packet card front to complete.



Poppy Friendship Mix Card

Paper:

Basic Black- 5 1/2" x 4 1/4" card base,

scraps for poppy outline

Real Red-4 1/2 x 3 3/4" mat,

scraps for poppy

Soft Succulent and Evening Evergreen-scraps for leaves

True Love 12" x 12" Designer Series Paper-5 1/4" x 4"

Basic White-seed packet print-out trimmed to 4 1/4" x 3 1/2"

Accessories: computer printer, Stampin' Cut & Emboss Machine, Poppy Moments Die, Tombow Liquid Glue, Mini Dimensionals, Rhinestone Jewels.

1. Print Friendship Mix Seed Packet on Basic White card stock. Trim individual seed packets using a paper trimmer.
2. Cut poppy and leaves using a die-cut machine and Poppy Moments Dies.
 - solid image out of Real Red card stock
 - detail image out of Basic Black card stock
 - solid image for leaves out of Soft Succulent card stock
 - detail image for leaves out of Evening Evergreen card stock
3. Layer the pieces using Tombow Liquid Glue.
4. Attach poppy to seed packet card front using Mini Dimensionals to pop it up. Slip leaves behind the poppy using Tombow Liquid Glue
5. Attach seed packet card front to Real Red mat. Attach True Loves Designer Paper to Basic Black card base. Attach seed packet card. Attach Rhinestone Jewels to pansy to complete.



Daisy Friendship Mix Card

Paper:

Basic Black-5 ½" x 4 ¼" card base,

4 ½" x 3 ¾" mat

New Horizons 6"x6" Designer Series Paper-

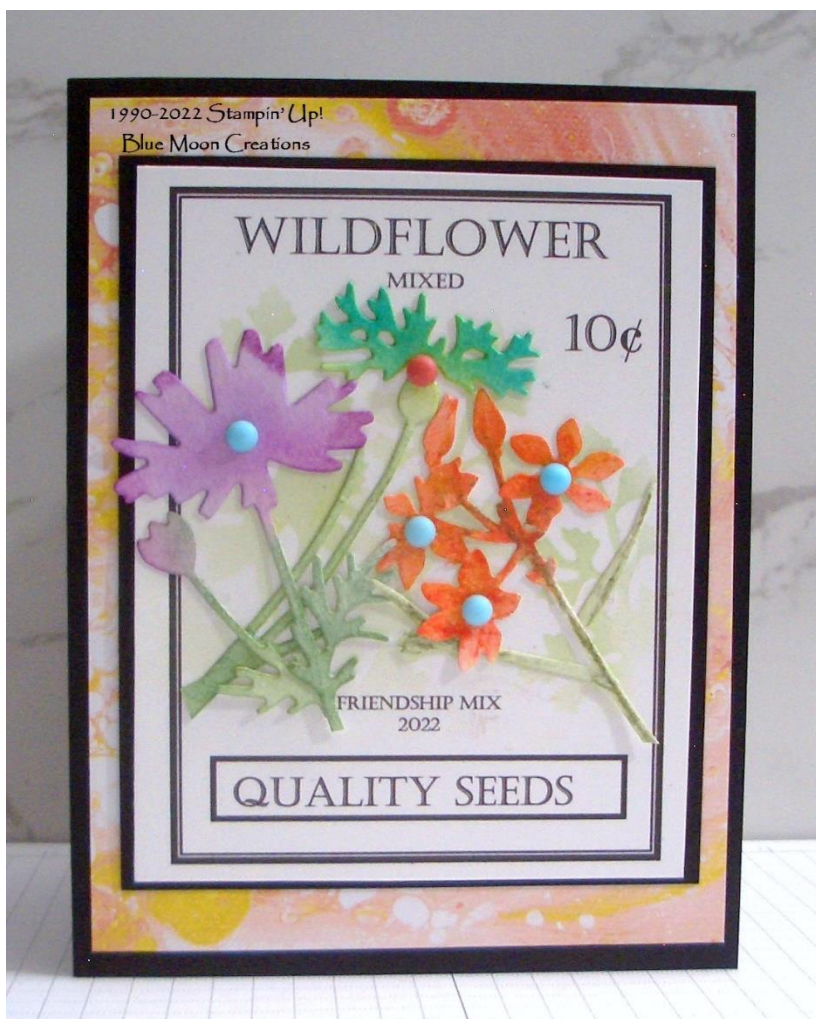
5 ¼" x 4",

scraps for daisies and center

Basic White- seed packet print-out trimmed to 4 ¼" x 3 ½"

Accessories: computer printer, Daisy and ¾" circle punches, Mini Dimensionals, Black Matte Dots

1. Print Friendship Mix Seed Packet on Basic White card stock. Trim individual seed packets using a paper trimmer.
2. Punch Daisies out of New Horizons Designer Paper using the Daisy Punch. Punch daisy centers out of New Horizons Designer Paper using a ¾" circle punch.
3. Layer the daisies using a Mini Dimensional in between. Attach the circles to the centers.
4. Attach daisies to seed packet card front using Mini Dimensionals to pop them up.
5. Attach seed packet card front to Basic Black mat. Attach New Horizons Designer Paper to Basic Black card base. Attach seed packet card. Attach Black Matte Dots to complete.



Wildflower Friendship Mix Card

Ink: Blackberry Bliss, Calypso Coral, Bermuda Bay, Soft Succulent

Paper:

Basic Black-5 ½" x 4 ¼" card base,

4 ½" x 3 ¾" mat

Watercolor-scrap

Waves of Inspiration 12"x12" Designer Series Paper-
5 ¼" x 4"

Basic White- seed packet print-out trimmed to 4 ¼" x
3 ½"

Accessories: computer printer, Stampin' Cut &
Emboss Machine, Meadow Dies, sponge daubers,
Tombow Liquid Glue, Enamel Dots

1. Print Friendship Mix Seed Packet on Basic White card stock. Trim individual seed packets using a paper trimmer.
2. Cut flowers from watercolor paper using a die-cut machine and Meadow Dies. Save the stencil cut-out for step 3.
3. Using Sponge Daubers, add ink to the flowers, stems, and leaves. I used Blackberry Bliss, Calypso Coral, Bermuda Bay, and Soft Succulent inks for this card.
4. Place the stencil cut-out left over from die-cutting the flowers on the seed packet card front. Using a Sponge Dauber, lightly add ink through the stencil. For this card, I used Soft Succulent.
5. Attach the flowers to the seed packet card front using a small amount of Tombow Liquid Glue.
6. Attach seed packet card front to Basic Black mat. Attach Waves of the Ocean Designer Paper to Basic Black card base. Attach seed packet card. Attach Enamel Dots to complete.

Endless Bouquet-Cut Flower Garden Card

Stamp Set: Bottled Happiness

Ink: Blushing Bride, Orchid Oasis, Flirty Flamingo, Sweet Sorbet, Granny Apple Green, Tahitian Tide, Gorgeous Grape

Paper:

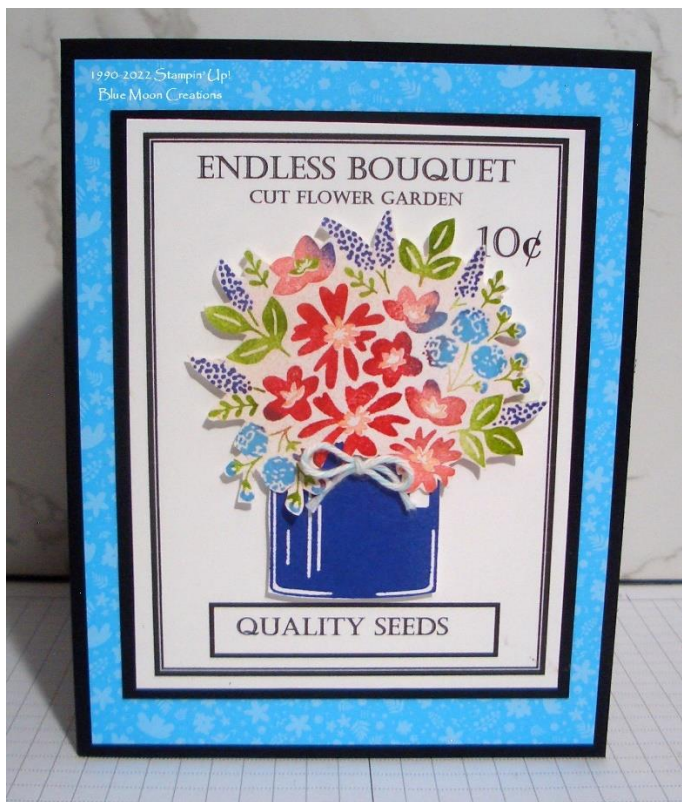
Basic Black-5 ½" x 4 ¼" card base,

4 ½" x 3 ¾" mat

2022-2024 In Color 6"x 6" Assortment Designer Series Paper

Basic White- seed packet print-out trimmed to 4 ¼" x 3 ½",
scrap for flowers and bottle

Accessories: computer printer, Stamparatus, Sponge Daubers, scissors, Mini Dimensionals, Bermuda Bay Baker's Twine, Glue Dot



1. Print Friendship Mix Seed Packet on Basic White card stock. Trim individual seed packets using a paper trimmer.
2. Two-step stamp the flower image from Bottled Happiness:
 - Place Basic White card stock in Stamparatus, holding it in place using the magnets. Position the leaves image on card stock, and close the plate, picking up the stamp.
 - Using a Sponge Dauber, add Granny Apple Green ink to the leaves on the image and stamp by closing the Stamparatus plate. Add more color if needed and stamp again. Using a Sponge Dauber add Blushing Bride ink to the flower centers on the image and stamp by closing the Stamparatus plate. Add more color if needed and stamp again.
 - Remove the leaves image from the plate and replace it with the flower image, lining up the flowers with the stamped flower centers.
 - Using a Sponge Dauber, add Sweet Sorbet ink to the larger flowers and stamp by closing the Stamparatus plate. Add more color if needed and stamp again. Continue to fill in the parts of the flower image using Blushing Bride, Flirty Flamingo, Tahitian Tide, and Gorgeous Grape inks. Ink each piece individually and stamp by closing the Stamparatus plate. Add more color if needed and stamp again.
3. Fussy cut image using a pair of scissors. Lightly sponge Blushing Bride ink over the image.
4. Stamp smaller bottle from Bottled Happiness on a scrap piece of Basic White card stock using Orchid Oasis ink. Fussy cut using a pair of scissors.
5. Attach bottle and flowers to seed packet card front using Mini Dimensionals to pop them up.
6. Attach seed packet card front to Basic Black mat. Attach 2022-2024 In Color Designer Paper to Basic Black card base. Attach seed packet card. Tie a bow out of Baker's Twine and attach to the card front using a Glue Dot to complete.



Sunflower Friendship Mix Card

Stamp Set: Celebrate Sunflowers

Ink: Soft Succulent, Evening Evergreen, Cajun Craze, Pumpkin Pie, Mango Melody, Crushed Curry Stampin' Write Markers

Paper:

Basic Black-5 ½" x 4 ¼" card base,

4 ½" x 3 ¾" mat

He's the Man 12"x12" Designer Series Paper-

5 ¼" x 4",

Basic White- seed packet print-out trimmed to 4 ¼" x 3 ½",

scraps for sunflowers

Accessories: Stampin' Cut & Emboss Machine, Sunflowers Die, Stamparatus, Mini Dimensionals

1. Print Friendship Mix Seed Packet on Basic White card stock. Trim individual seed packets using a paper trimmer.
2. Position scrap piece of Basic White card stock in the Stamparatus. Attach sunflower stamp to Stamparatus plate. Apply markers to individual parts of the leaves and sunflowers, stamping each portion before adding the next color. I used Soft Succulent and Evening Evergreen markers for this card for the leaves. I used Cajun Craze, Pumpkin Pie, Mango Melody, and Crushed Curry markers for the sunflowers.
3. Cut sunflowers out using a die-cut machine and coordinating Sunflowers Die.
4. Attach sunflowers to seed packet card front using Mini Dimensionals to pop them up.
5. Attach seed packet card front to Basic Black mat. Attach He's the Man Designer Paper to Basic Black card base. Attach seed packet card.

Gift Box



Supplies Needed:

10 ¼" x 9 ¼" card stock or designer paper. This box could be made in any size to fit any project. Just remember to score 3" on all four sides.

Paper Cutter with scoring blade

Adhesive-If you are using a heavier-weight piece of card stock, you may want to use Tear & Tape.

Paper snips

Stamps, ink, dies or punches, and coordinating card stock and/or ribbon to decorate

Piece of cardboard to put in the bottom of the box to make it a little sturdier. I used the lightweight cardboard packing in the Designer Series Paper packets. The cardboard measures 4 ¼" x 3".

1. Cut your card stock or Designer Series Paper to 10 ¼" x 9 ¼".
2. Score at 3" on all four sides.
3. Using the diagram below as a guide, cut on the solid red lines on 9 ¼" sides.
4. Fold along the score lines using a bone folder. Fold the end pieces up. Apply Tear & Tape adhesive to adhere (watch the video for placement)
5. Decorate the front of the box. Add a piece of coordinating designer paper or card stock measuring 4 ¼" x 1" to the front of the box.
6. Stamp greeting on cardstock and die-cut or punch. Attach to box front using Mini Dimensionals to pop it up.
7. Optional: Add a piece of light-weight cardboard measuring 4 ¼" x 3" to the inside of the box to provide stability.

Supplies Used:

Stamp Set: Dragonfly Garden

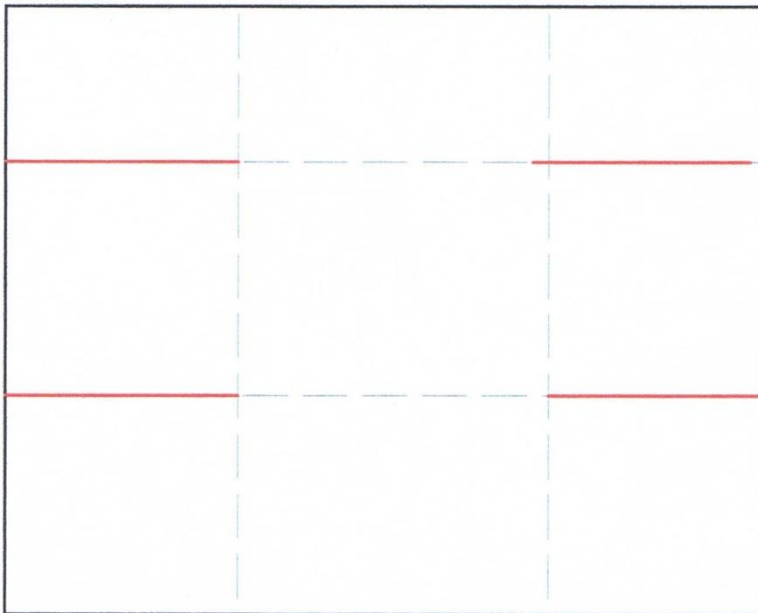
Ink: Memento Black

Paper: Basic Black, Real Red Perfectly Penciled Designer Series Paper

Accessories: Stampin' Cut & Emboss Machine, Painted Labels Die, Tear & Tape Adhesive, Mini Dimensionals, light-weight cardboard

Gift Box Template

10 ¼" x 9 ¼", Score at 3" on all four sides



Cut along the solid red lines, score along the dashed lines

1990-2022 Stampin' Up!
Blue Moon Creations



1990-2022 Stampin' Up!
Blue Moon Creations

